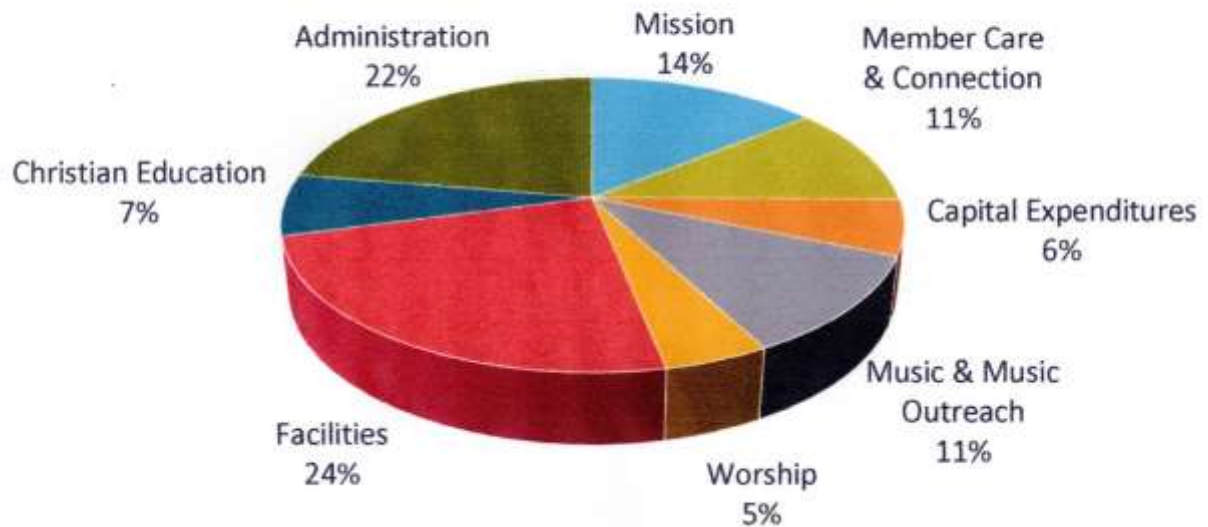


How Your Contributions Are Used



Worship & Music

We give to uphold Bradley Hills' tradition for excellent worship services and music. Your contributions compensate staff who lead our worship and music. They pay musicians who enhance our weekly services and services at Christmas, Easter and other special occasions. They also pay for upkeep of our organ

Missions

We give because Christ charged us to help others. Your contributions support our outreach to groups in the Washington D.C. area and around the world, and also support mission activities sponsored by the Presbyterian Church

Note: Compensation for the church's staff is allocated among these 6 categories based on the estimated percentage of time they spend on each.

Member Care and Connection

We give because we are committed to caring for each other. Your contributions support all the work that our staff and volunteers do to provide comfort and connection for members of the congregation. They support the Deacons' work, including special Congregational Life events such as the all-church picnic and welcome-back brunch, and weekly and monthly

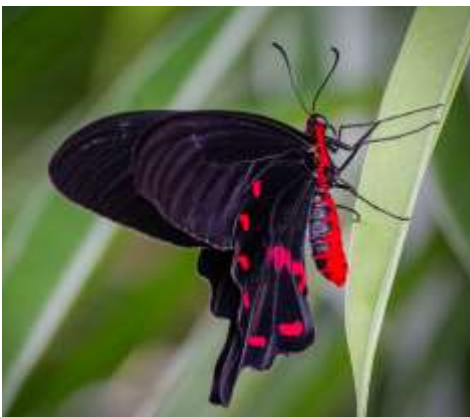


Facilities and Capital Expenditures

We give so that our building and grounds will continue to be the beautiful sanctuary that we love. Your contributions pay for utility bills, maintenance and upkeep for the building and parking lots, professional care for our trees, and compensation for the sextons who clean and care for our property. Session also sets aside a portion of each year's income into the Capital

Christian Education

We give because it is vital to impart our faith tradition to the next generation and to inspire adult learners with new ways to live their faith. Your contributions support our programs for



Administration

And we give because all of this work must be properly coordinated. Your contributions pay the costs of Session, the Finance and Stewardship Lay Ministries, plus office operations, office tech-