

Bradley Hills Presbyterian Church

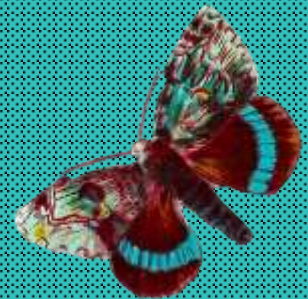
Stewardship 2023



**Abundant
Blessings**

**Abundant
Gratitude**

**Abundant
Giving**



Do not neglect to do good and to share what you have, for such sacrifices are pleasing to God.

Hebrews 13:16



**Abundant
Blessings**

**Abundant
Gratitude**

**Abundant
Giving**

Each fall the Stewardship Lay Ministry invites the congregation of Bradley Hills Presbyterian Church to pledge the amounts they will give in the coming year. Last fall's pledges covered about 70% of the church's budget for 2022.

In 2023 we expect to continue our joyful return to in-person worship and congregational life as the threat from covid-19 recedes, while continuing livestreamed worship and adult education for those who cannot attend in person. The church's expenses from livestreaming will continue, and there will be increased costs in all budget categories due to inflation. To cover these costs and continue to provide the church programs that we love, we urge each household or individual prayerfully to consider increasing their 2022 pledge or pledging for the first time.



Then the people rejoiced because these had given willingly,
for with single mind they had offered freely to the Lord.

I Chronicles 29:9

Pastor Gray's Message

Dear Friends,

This past summer our family visited some of the key places in Rome where St. Paul lived, wrote, was imprisoned and is buried.

The Church of St. Paul at the Three Fountains, a beautiful church in Rome, has three memorial statues inside. These statues commemorate Paul's life and death, located in a church at a spot where it's said that three fountains sprang up at the places where Paul's body hit the ground after his martyrdom. It has been seen as proof that faithfulness, caring, sacrifice and hope all can lead to wellsprings of sacred beauty and meaning in the church that extend into the future.



As Bradley Hills prepares for 2023, we know that faithfulness, caring, sacrifice and hope can lead to springs of sacred beauty and meaning in our time, too.

Our church's 2023 Stewardship campaign is critical for our future. As we re-emerge and re-engage, we come back together from our covid separation, and we need to invest in our ministries. Our new strategic plan will challenge us to dream big and to trust in God. We must hire critical new team-members following significant retirements. We will make investments in technology to expand our digital church for the future. As we educate and pass on faith to the next generation, care for our longtime members, change lives through mission, spread the Gospel of Jesus Christ to a world in need of healing, lift up beautiful music and worship, and strengthen our spiritual home at 6601, we need your help.

Each of us is called to care faithfully about our church and to give of ourselves in hope as a spiritual act in response to God's grace.

I hope you will consider joining me and my family in making and even increasing your pledge to BHPC for 2023.

Together, we can help BHPC be a place of sacred beauty and meaning. Join us as we build up this holy place, to do good in the world, at this critical time. Put your faith in God, and join me in making a pledge on November 6 to support Bradley Hills for 2023.

In Christ's love,

David



Session Goals for 2023

Stewardship is fundamental to the operation of Bradley Hills. It funds everything from the gasoline in the vans used on youth mission trips to sheet music for the choir. On a broader level, stewardship also supports the budget priorities that Session identifies each year to enable the church to best achieve its mission. These priorities are broader in scope than the initiatives that the lay ministries put forward during the annual budgeting process. These priorities for 2023 include:

1. ***Keeping Bradley Hills Strong Through Key Staff Transitions.*** One of the things that has always made Bradley Hills special is the knowledge and dedication of its staff. Amy de Court, Manager of Financial Services; Linda Reynolds, Office Manager; and Samantha Steinfeld, Communications Specialist, are retiring or transitioning, and we are looking to the future for keeping these ministries strong. Your pledges are integral to this process. The church cannot recruit their replacements without offering a competitive salary and benefits package. Your donations will make that possible.
2. ***Implementing the Recommendations of the Strategic Visioning Task Force.*** As the Strategic Visioning Task Force fulfills its mandate of discerning God's will for our congregation's future, your pledges will enable the Task Force to take the steps necessary to keep our congregation growing and engaged. The Task Force will also evaluate how we can encourage the congregation's continued involvement in activities like the racial justice initiative and other educational and mission opportunities. We will together move into the future with hope.



3. ***Increased Connection Through Improved Technology.*** The pandemic has changed the way that people attend church. The "hybrid" model of people participating in worship both in person and online is now routine. This model, however, creates both opportunities and challenges for Bradley Hills. Remote worship is good because both worship and lay ministries can now include people who live at great distances. The challenge is that we must update our technology regularly to maintain our connection with remote parishioners and to allow them to actively participate. We will not be the church God is calling us to be if our technology makes it hard for folks to watch our worship services or our website is outdated and does not provide people with the information that they seek. Your pledges will support the technology upgrades that Bradley Hills needs.
4. ***Increasing Our Financial Reserves.*** Our building is our church home where we gather for worship, learning and fellowship. It is also a source of revenue from the fees that we receive from the other organizations that use it. Our building is aging though, and our capital reserves are being expended to maintain it. It is vital that we increase these reserves so that we can continue to use our current building for many years to come.

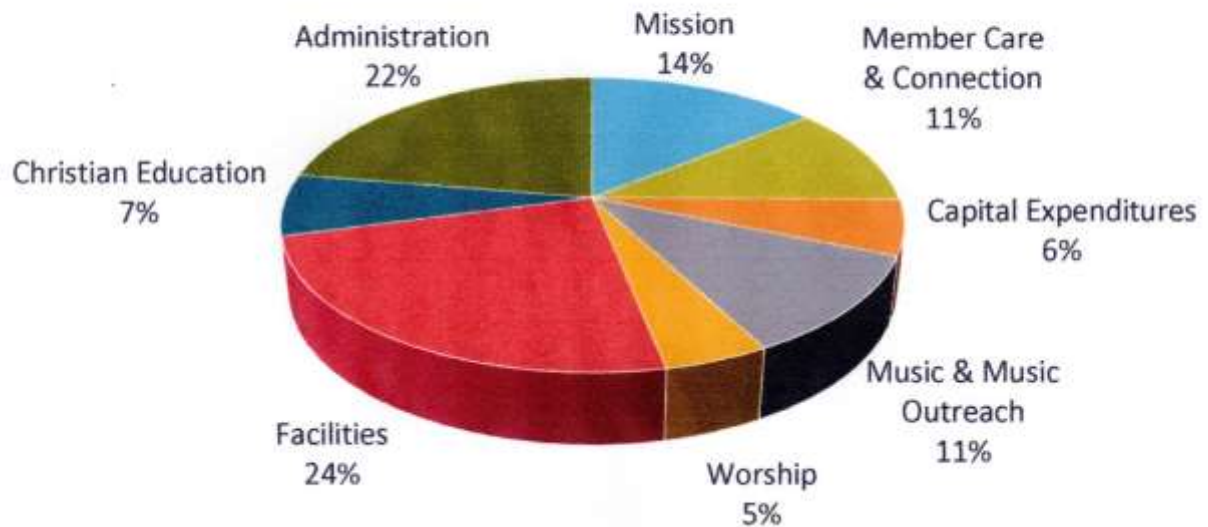


From everyone to whom much has been given, much will be required,
and from the one to whom much has been entrusted, even more will
be demanded.

Luke 12:48

Why We Give

How Your Contributions Are Used



Worship & Music

We give to uphold Bradley Hills' tradition for excellent worship services and music. Your contributions compensate staff who lead our worship and music. They pay musicians who enhance our weekly services and services at Christmas, Easter and other special occasions. They also pay for upkeep of our organ and pianos, and for beautiful flowers.

Missions

We give because Christ charged us to help others. Your contributions support our outreach to groups in the Washington D.C. area and around the world, and also support mission activities sponsored by the Presbyterian Church USA.

Note: Compensation for the church's staff is allocated among these 6 categories based on the estimated percentage of time they spend on each.

Member Care and Connection

We give because we are committed to caring for each other. Your contributions support all the work that our staff and volunteers do to provide comfort and connection for members of the congregation. They support the Deacons' work, including special Congregational Life events such as the all-church picnic and welcome-back brunch, and weekly and monthly communications with members.

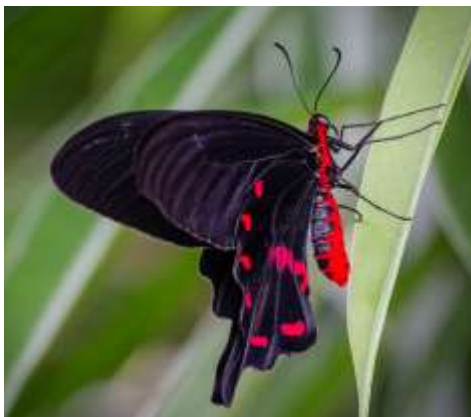


Facilities and Capital Expenditures

We give so that our building and grounds will continue to be the beautiful sanctuary that we love. Your contributions pay for utility bills, maintenance and upkeep for the building and parking lots, professional care for our trees, and compensation for the sextons who clean and care for our property. Session also sets aside a portion of each year's income into the Capital Reserve Fund to pay for major repairs and improvements as needed.

Christian Education

We give because it is vital to impart our faith tradition to the next generation and to inspire adult learners with new ways to live their faith. Your contributions support our programs for children, youth, and adults, as well as our racial justice initiative.



Administration

And we give because all of this work must be properly coordinated. Your contributions pay the costs of Session, the Finance and Stewardship Lay Ministries, plus office operations, office technology, and our per capita contribution to the Presbytery.

Why Do We Pledge?

We believe pledging is God's work in our lives.

1. ***Pledging empowers identity.*** A pledge card says, "I am a part of something larger than myself." It says I stand in solidarity with my family of believers. When we do the math and sign the card, we are saying, "as for me and my house, we will serve the Lord."
2. ***Pledging empowers accountability.*** Deeply rooted in our theology is the conviction that we exist as a dynamic community of strength and grace, intended to help individuals live into and up to their fullest potential in Christ. When we pledge, we create accountability and empower our church.
3. ***Pledging empowers the ministry budget.*** There is a practical reason for pledging. A church budget is a *ministry funding plan* that is built with a variety of tools. When we pledge, we help our leadership responsibly fund our ministry initiatives.

The vitality and sustainability of the ministries we value are strengthened with each commitment pledged.



The earth is the Lord's and all that is in it, the world, and those who live in it; for God has founded it on the seas, and established it on the rivers.

Psalms 24:1-2

How Much Do People at Bradley Hills Give?

The chart below shows that for 2022 we received a total of 201 pledges from individuals and families for a total of \$1,037,805.

- 143 pledges (52% of total pledges) contribute 27% of the total pledge dollars.
- 36 pledges (18% of total pledges) contribute 23% of the total pledge dollars.
- 22 pledges (11% of total pledges) contribute 50% of the total pledge dollars.

Range	Of	2022 Pledges	Number Of Pledges in Range	% Of Total Pledges	Dollars For This Range	% Of Total Pledge Dollars
0	to	999	29	14.4%	12,360	1.2%
1,000	to	2,999	75	37.3%	127,870	12.3%
3,000	to	4,999	39	19.4%	142,260	13.7%
5,000	to	9,999	36	17.9%	234,575	22.6%
10,000	to	19,999	13	6.5%	157,900	15.2%
20,000	and up		9	4.5%	362,840	35.0%
Total			201	100.0%	1,037,805	100.0%

The church encourages every member or household to make a financial commitment for 2023.

If you have not pledged before, we ask that you prayerfully consider making a pledge this year, providing even more reliable support for the church and its ministries. If you have pledged before, we ask that you prayerfully consider increasing your pledge this year, to help the church meet its increased expenses during this period of inflation.



All shall give as they are able, according to the blessing of the Lord our God.

Deuteronomy 16:17

ways to
give at

Bradley Hills Presbyterian Church

Visit www.bradleyhillschurch.org for more information.



Mobile Giving

Use our Realm Connect App. Select the Giving Button.

Online Giving

Give Now button at www.bradleyhillschurch.org or onrealm.org/BradleyHillsChurch/-/form/give/now



Text Giving

Text "BHPC" to 73256 to give using your phone or tablet.

In-Person Giving

Use the offering plate during worship or drop off or mail to the church office:
6601 Bradley Blvd
Bethesda, MD 20817.



"The Lord has blessed me greatly,
and I want to give back through
Bradley Hills."

Frank Randall

"I give to Bradley Hills because God depends on
us to support the faith community and its
outreach to the neighborhood and the world."

Penny Clarke

"I give to Bradley Hills in
thankfulness for providing a spiritual
home to explore and strengthen my
faith through worship and education."

Nancy Cylke

"I give because I believe in the mission
of Bradley Hills."

Joel Fickett

"I pledge, because even from Florida,
Bradley Hills is still a vital part of my
life."

Alvin Stenzel

"I give to BHPC to glorify God
and God's abundant generosity."

Amy de Court

"Each year my wife and I make a
pledge to Bradley Hills. It reminds
us that all we have and all we are, we
owe to God."

Rick Arndt



Bradley Hills Stewardship Lay Ministry

For where your treasure is, there your heart will be also.

Matthew 6:21

Please visit BradleyHillsChurch.org

to see and print:

[2023 Commitment Card](#)

[Guidance for Giving at Bradley Hills](#)

[Ways to Give to Bradley Hills](#)



Bradley
Hills

PRESBYTERIAN CHURCH

6601 Bradley Boulevard
Bethesda, Maryland 20817
www.bradleyhillschurch.org
301-365-2850

Special thanks to Cheryl Naulty for the butterfly photos.