



## Reconnecting in 2024



Bradley  
Hills

PRESBYTERIAN CHURCH

**Abundant Blessings | Abundant Gratitude | Abundant Giving**



## A Message From Pastor David

Dear Friends,

This Fall's Stewardship campaign is focused on reconnecting at Bradley Hills: Remaking the spiritual and personal connections that will keep our community vibrant and allow us to continue making a difference in the lives of our families and the community around us.

Our Strategic Visioning Task Force (SVTF) has given us a blueprint for the next five years to help us be the church that Christ is calling us to be. Bradley Hills is already doing great things, and even greater things can be in our future. The Lay Ministries have been given the opportunity to envision and build specific programs based on the SVTF's blueprint. All BHPC members and friends are asked to help make this vision possible through time and talent, but also by pledging financial support. In pledging an estimate of our giving to the church for 2024, we respond to God's love and help BHPC make plans for the year to come.

In order for us to increase our mission spending, pay for upgraded security, add enough to the Capital Reserve Fund so that money will be available when physical property needs repair or replacement, and keep our music and education programs strong, we need a strong pledge response. This year in particular, we are excited to follow where God is leading us to reconnect:

- Creating social activities for in-person reconnecting.
- Enhancing our digital platforms to allow virtual reconnecting.
- Expanding hands-on mission so we reconnect while serving alongside each other.
- Ensuring that our programs for families with kids connect our many visitors with our church.
- Building meaningful spiritual gatherings so we can reconnect, not only with each other, but with the God who loves us and calls us to be the body of Christ.

Please give prayerful consideration to increasing your pledge from last year or, if you have not pledged before, to making a pledge of what you will give in 2024.

Whether you are considering a first gift, a first pledge, or have been pledging for decades, please give generously as an act of faith. Support the work of Bradley Hills as we seek to rebuild the connections among our members and friends, and to continue and expand the work we do in the community.

In Christ's love,

*David*






## Our Goals for 2024

Session, in collaboration with the Lay Ministries, the congregation, and the Holy Spirit, has set the following goals to be implemented based on the Strategic Visioning Task Force's report and recommendations. The priorities identified for 2024 include:


1) **Strengthening Bonds Between Members of the Congregation.** Your Stewardship support will enable the church to offer more opportunities for: (i) education and spiritual growth; (ii) activities for children and youth; (iii) "hands-on" mission programs; and (iv) fellowship events.

2) **Increasing Connection Through Improved Technology.** The "hybrid" model of people participating both in-person and online in worship, programs, fellowship, and other activities has become the norm. We will be the Church God is calling us to be if our technology matches our inclusive spirit. Up-to-date technology will allow folks to join in our worship services and connect through our updated website and will provide people with the information that they seek.

3) **Increasing Our Financial Reserves.** Our building is both our church home where we gather for worship, learning, and fellowship, and a significant source of revenue for the church. It is aging though, and requires regular expenditures to maintain it. For many years, replenishment of the Capital Reserve has not kept pace with expenditures from the reserve. The Session believes it is vital to significantly increase annual replenishment to come closer to a balance between funding and expenditures.



*"We who are many are one body in Christ and individually we are members one of another."  
Romans 12:5*





# Sources of the Church's Income: The Importance of Pledging

Because pledges account for 73% of the Church's income, it is vital that all of us pledge what we expect to give in the coming year. The Finance Lay Ministry and Bradley Hills' Session need to know how much income they can expect when they develop the Church's budget. Pledges are the way that we, the members and friends of the Church, give them that information.

*"But since you excel in everything--in faith, in speech, in knowledge, in complete earnestness, and in the love we have kindled in you--see that you also excel in this grace of giving."  
2 Corinthians 8:7*



*Pledges are the foundation of our ministries...*

## Why We Give

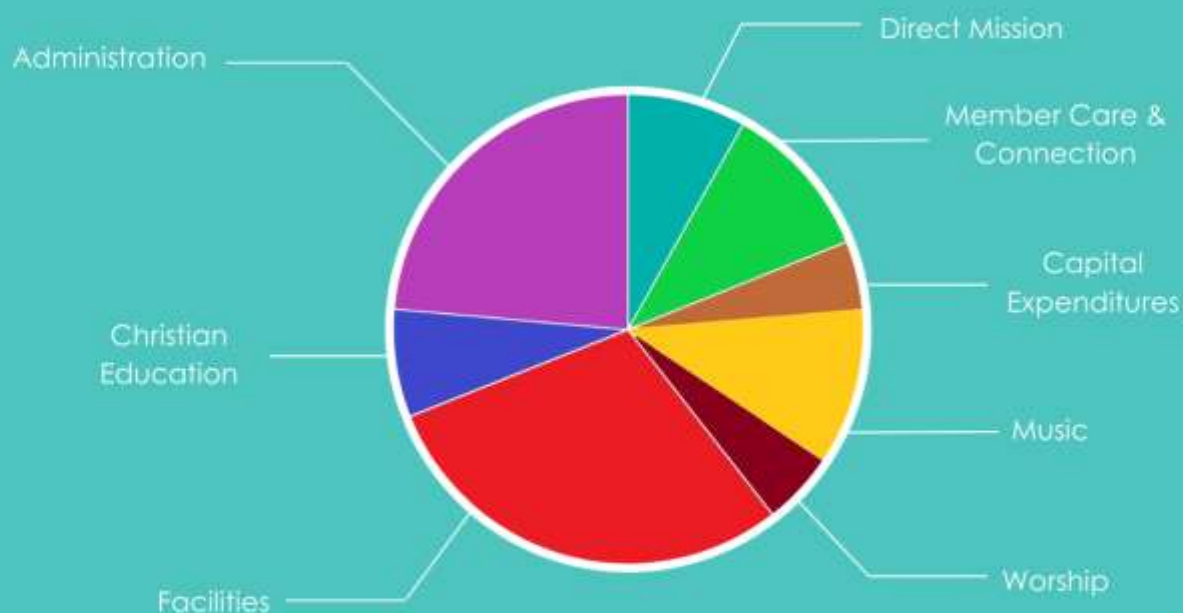
*"And let us consider how to provoke one another to love and good deeds, not neglecting to meet together...but encouraging one another."  
Hebrews 10:24-25*

We rely on a ministry of connection.

Giving strengthens our relationships with God, our community, and each other.



# How Are Your Pledged Gifts Used?



*Note: Staff salaries are allocated to each of the areas above.*

## Worship & Music

We give because worship and music are an important way to connect us and acknowledge God's presence in the world and in our lives. Worship and music transform, renew, and better equip us for God's service.

## Member Care & Connection

We give because, as a church community, we are called to love and care for one another. Through our financial support, we make it possible to give loving care to those among us experiencing hardship or grief. By promoting fellowship and communications, we strive to be a loving and connected community.

## Mission

We give because missions are essential to what it means to be a church. As followers of Christ, we are called to love our neighbors in ways that proclaim the good news by working and giving to combat poverty and injustice both locally and in the world.

## Christian Education

We give so that Bradley Hills can be a place where people of all ages learn and grow together in faith. We provide a nurturing environment for our children and youth to learn of God's love, and we challenge adults with speakers and studies to improve our understanding of how to live our faith.

## Administration

We give so that our dedicated staff can coordinate the work of the church, ensure that resources are used appropriately, and maintain our connectional relationship to the Presbytery for support to all of the church's ministries.

## Facilities & Capital

We give because a clean, safe, secure, and energy-efficient property is essential for supporting worship and providing a welcoming space for our many ministries, and for building partners and community groups that use 6601 Bradley Blvd.





## How Much Do People at Bradley Hills Give?

Amount	# of Pledges	% of Total Pledges	Pledge \$ for this Range	% of Total Pledge \$
\$1 - \$999	27	14%	\$11,255	1%
\$1,000 - \$2,999	67	34%	\$108,439	10%
\$3,000 - \$4,999	44	22%	\$156,920	14.4%
\$5,000 - \$9,999	34	17%	\$233,309	21.4%
\$10,000 - \$19,999	16	8%	\$207,000	19%
\$20,000+	9	5%	\$372,070	34.2%
<b>Total</b>	<b>197</b>	<b>100%</b>	<b>\$1,088,993</b>	<b>100%</b>

### Summary:

In 2023, BHPC received 197 pledges for a total of \$1,088,993.

- 138 pledges (70% of the total) represented 25.4% of the pledged total amount.
- 34 pledges (17% of the total) represented 21.4% of the pledged total amount.
- Only 25 pledges (13% of the total) represented 53.2% of the pledged total amount.

Will You Step Up?

*"And let us consider how to provoke one another to love and good deeds, not neglecting to meet together... but encouraging one another."  
Hebrews 10:24-25*



## How Much Should You Give?

### Did You Know?

The Biblical standard of giving is called a tithe, and is the equivalent of 10% of one's income for the year.

*"All tithes from the land, whether the seed from the ground or the fruit from the tree, are the Lord's; they are holy to the Lord... All tithes of herd and flock, every tenth one that passes under the shepherd's staff, shall be holy to the Lord."*

Leviticus 27:30, 32

**If you are not yet tithing to BHPC, try "growth giving":**

Increase your giving by 1% of your income each year. The QR code below links to a table on BHPC's website with examples that can help you step up your contributions through growth giving. If everyone stepped up their pledges, even by small amounts, the additional pledged income could allow us to increase the amount we contribute to missions and to add more money to the Capital Reserve Fund for future building repairs or replacements.

### **Pledge to BHPC what you can commit to in advance.**

- If your income is variable, base your pledge on a conservative estimate. Then, if your 2024 income exceeds that estimate, make an additional gift at year-end.
- If you are on a fixed income, set aside what you need for known expenses, add a contingency for unexpected needs, and pledge part of the remainder.
- If you have been blessed financially and can pledge more of your 2024 income to BHPC as part of your charitable giving, consider increasing your pledge.





# How Can I Give?

## Cash or Check Giving



Give by:

- Offering Plate
- Church Office
- or Mail

6601 Bradley Blvd.  
Bethesda, MD 20817

## Text Giving



Text "BHPC"  
to 73256

Click the  
link to give.

## Mobile Giving

Download the  
Realm  
Connect app



Set up your  
Giving by:

- Connecting Realm to your bank account
- Entering a Credit or Debit card number

## Online Giving

Visit the Bradley  
Hills Website:

Go to the  
Giving Page

Click the "Give  
Now" Button



[bradleyhillschurch.org](http://bradleyhillschurch.org)

## BHPC's Database

Pledge  
Give  
Connect  
On Realm



## Questions?

Director of Financial  
Ministries: Jan Spencer  
[jan@bradleyhillschurch.org](mailto:jan@bradleyhillschurch.org)  
(301)365-2850 ext. 505